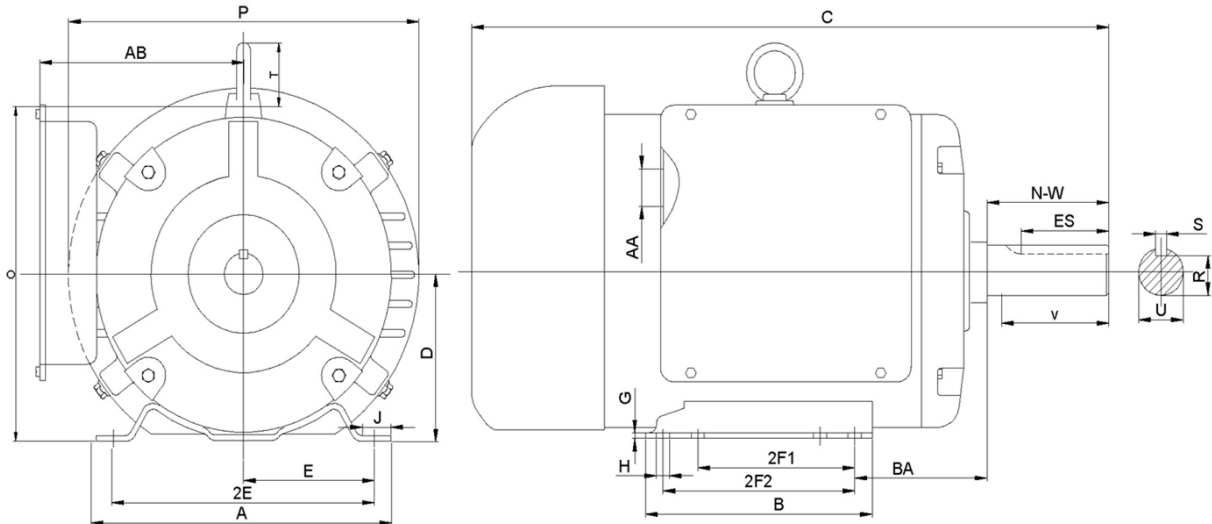




F215T10S4C

FARM DUTY ELECTRIC MOTOR
 HIGH STARTING TORQUE
 SINGLE PHASE - CAPACITOR START / CAPACITOR RUN
 ROLLED STEEL CONSTRUCTION
 TOTALLY ENCLOSED FAN COOLED



DIMENSIONS

HP	RPM	Frame	MOUNTING														
			A	B	C	D	G	H	J	E	2E	2F1	2F2	O	P	T	BA
10	1800	215T	11	9.4	20.4	5.25	0.7	0.41	2.4	4.25	8.5	5.5	7	11.2	11.6	1.9	3.5

Shaft Extension, Key Set						Conduit Box		Bearings		Mount
U	V	R	S	ES	N-W	AA	AB	DE	ODE	
1.375	3.12	1.201	0.312	2.41	3.38	1	9	6307-2RZC3	6206-2RZC3	F1

BEARING LUBRICATION: The bearings come lubricated with Mobil Polyrex EM Polyurea Grease.



ElectricalHelper.org

For All Your Electric Needs Since 1928
 411 N Platte Ave. York, NE. 68467

AC-DC MOTORS :: SALES & SERVICE
REWINDING :: CUSTOM CONTROL PANEL

Kelly MacMillan
 Office PH: 888.226.4917 Ext. 102
 Fax: 888.226.4917
 Cell: 402.679.1579
 E-Mail: kelly@electricalhelper.com



F215T10S4C

**FARM DUTY ELECTRIC MOTOR
HIGH STARTING TORQUE
SINGLE PHASE - CAPACITOR START / CAPACITOR RUN
ROLLED STEEL CONSTRUCTION**

PERFORMANCE DATA

HP	RPM	Frame	Voltage	Frequency (Hz)	Full Load S.F.	Insulation Class	NEMA Design	Slip (%)	NEMA Code	Enclosure Type	IP Rating	Max. Ambient
10	1738	215T	208-230/460V	60	1.15	F	L	3.6	G	TEFC	IP44	40°C

Amps (460V)		Efficiency (%)			Power Factor			Torque (ft-lb)			DE Bearing	ODE Bearing	Connection	Weight (lbs.)
FLA	LRA	100%	75%	50%	100%	75%	50%	FLT	LRT %	BDT %	6307-2RZC3	6206-2RZC3	6 Lead	150
18.9	133.8	88.7	85	80	0.97	0.96	0.93	40.89	299	225				

NAME PLATE											
North American Electric, Inc.						FARM DUTY HIGH STARTING TORQUE SINGLE PHASE ELECTRIC MOTOR TOTALLY ENCLOSED FAN COOLED					
MODEL		HP		RPM		FRAME		ENCL		PHASE	
F215T10S4C		10		1738		215T		TEFC		1	
VOLT		AMPS		S.F.		DESIGN		CLASS		CODE	
208-230/460V		18.9		1.15		L		F		G	
S.F. AMPS		CLASS		CODE		LBS		DE BEARING		ODE BEARING	
		F		G		0		6307-2RZC3		6206-2RZC3	
MAX AMB.		RATING		SER		CONT					
40°C		CONT		SER							
General purpose use on equipment and farm duty machinery requiring high starting torques. <div style="display: flex; justify-content: space-around; align-items: center; margin-top: 10px;"> </div>											

APPLICATIONS:

General purpose use on pumps, fans, conveyors, poultry equipment, air compressors and other farm duty machinery requiring high starting torques.



ElectricalHelper.org

For All Your Electric Needs Since 1928
411 N Platte Ave. York, NE. 68467

AC-DC MOTORS :: SALES & SERVICE
REWINDING :: CUSTOM CONTROL PANEL

Kelly MacMillan
Office PH: 888.226.4917 Ext. 102
Fax: 888.226.4917
Cell: 402.679.1579
E-Mail: kelly@electricalhelper.com