



OWP213T-3-6

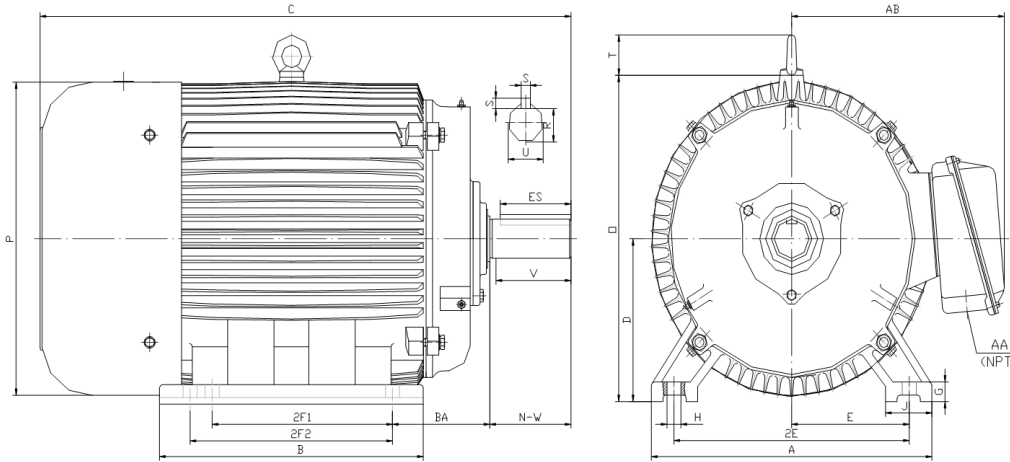
OIL WELL PUMP MOTOR

HIGH TORQUE / HIGH SLIP (5 - 8%)

TOTALLY ENCLOSED FAN COOLED

INVERTER DUTY 10:1 CONSTANT TORQUE - NEMA MG1 PART 31

Factory Certified for T2B Class I, Division II, Groups A,B,C & D and Class II, Division II, Groups F & G



DIMENSIONS

HP	RPM	Frame	MOUNTING														
			A	B	C	D	G	H	J	E	2E	2F1	2F2	O	P	T	BA
3	1200	213T	11.00	7.90	18.90	5.25	0.70	0.41	2.40	4.25	8.50	5.50	NA	10.50	10.20	1.90	3.50

Shaft Extension, Key Set					Conduit Box		Bearings		Mount	
U	V	R	S	ES	N-W	AA	AB	DE		ODE
1.375	3.12	1.201	0.312	2.41	3.38	1.00	8.30	6308-ZZ	6308-ZZ	F2



BEARING LUBRICATION: The bearings come lubricated with Mobil Polyrex EM Polyurea Grease. It is recommended that you add some additional lubrication when the motor is installed.

Three options (brands) for suitable lubrication include, but are not limited to, the following:

- 1.) Mobil Polyrex EM
- 2.) Citco Polyurea MP
- 3.) Conoco Phillips Polytac EP



Electrical Helper.org

For All Your Electric Needs Since 1928

411 N Platte Ave. York, NE. 68467

**AC-DC MOTORS :: SALES & SERVICE
REWINDING :: CUSTOM CONTROL PANEL**

Kelly MacMillan
Office Ph: 888-226-4917
Fax: 888-226-4917
Cell: 402-679-1579
E-Mail: kelly@electricalhelper.com





OWP213T-3-6

OIL WELL PUMP MOTOR

HIGH TORQUE / HIGH SLIP (5 - 8%)

TOTALLY ENCLOSED FAN COOLED

INVERTER DUTY 10:1 CONSTANT TORQUE - NEMA MG1 PART 31

Factory Certified for T2B Class I, Division II, Groups A,B,C & D and Class II, Division II, Groups F & G

PERFORMANCE DATA

HP	RPM	Frame	Voltage	Frequency (Hz)	Full Load S.F.	Insulation Class	NEMA Design	Slip (%)	NEMA Code	Enclosure Type	IP Rating	Max. Ambient
3	1130	213T	230/460/796	60	1.15	F	D	5.8	K	TEFC	55	40° C

Amps (460V)		Efficiency (%)			Power Factor			Torque (ft-lb)			DE Bearing	DE Bearing	Connection	Weight (lbs.)	
FLA	LRA	100%	75%	50%	Min.	100%	75%	50%	FLT	LRT %	BDT %				
5.0	32.0	79.0	80.5	80.0	75.5	0.74	0.66	0.51	14.0	330	340	6308-ZZ	6308-ZZ	12 Lead 2Δ/Δ/Y	130

NAME PLATE

Oil Well Pump Motor				CONNECTION DIAGRAMS	
INVERTER DUTY 10:1 CONSTANT TORQUE				NEMA DESIGN D HIGH TORQUE/HIGH SLIP (5-8%)	
CAT NO: OWP213T-3-6		HP 3	Hz 60	PHASE 3	
VOLTS 230/460/796		FLA 5.0	IP RATING 55		
RPM 1130	POWER FACTOR 0.74		DESIGN D		
FRAME 213T	NEMA NOM EFF 79.0		CODE K		
DRIVE END BEARING 6308-ZZ	NEMA MIN EFF 75.5		S.F. 1.15		
OPP DRIVE END BEARING 6308-ZZ	MAX AMB 40° C		INS CLASS F		
ENCL TEFC	RATING CONT	SER			
MOTOR WEIGHT 130 LBS	CONNECTION 12 Lead 2Δ/Δ/Y		LUB: Mobil Polyrex EM		
Designed Specifically for use on Oil Well Pumping Units Hernando, Mississippi				CC 082A	
230V 					
460V 					
796V 					

APPLICATIONS:

Designed Specifically for use on Oil Well Pumping Units. Suitable for use on Variable Frequency Drives (VFDs).

Electrical Helper.org
 For All Your Electric Needs Since 1928
 411 N Platte Ave. York, NE. 68467
AC-DC MOTORS :: SALES & SERVICE
REWINDING :: CUSTOM CONTROL PANEL
 Kelly MacMillan
 Office Ph: 888-226-4917
 Fax: 888-226-4917
 Cell: 402-679-1579
 E-Mail: kelly@electricalhelper.com

