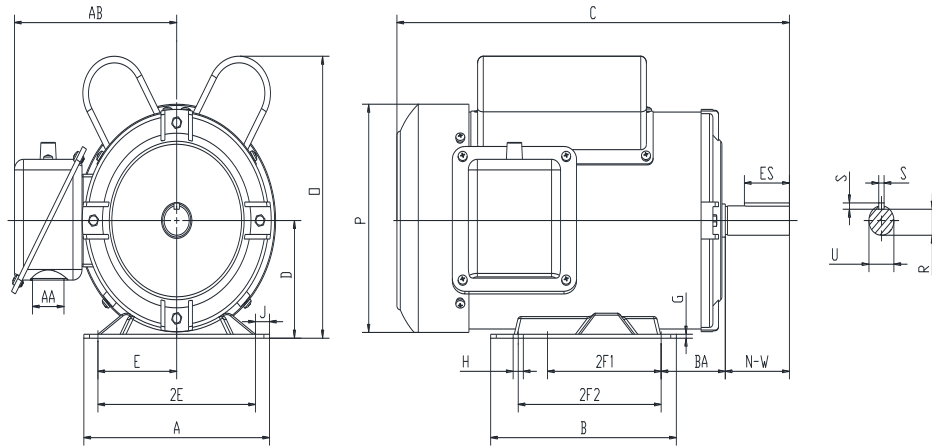




F143T1S4C-MO

FARM DUTY ELECTRIC MOTOR
HIGH STARTING TORQUE - MANUAL OVERLOAD
SINGLE PHASE - CAPACITOR START / CAPACITOR RUN
ROLLED STEEL CONSTRUCTION
TOTALLY ENCLOSED FAN COOLED



DIMENSIONS

HP	RPM	Frame	MOUNTING														
			A	B	C	D	G	H	J	E	2E	2F1	2F2	O	P	T	BA
1	1800	143T	6.5	6.5	12.6	3.5	0.12	0.34	0.5	2.75	5.5	4	5	8.5	6.8	NA	2.25

Shaft Extension, Key Set						Conduit Box		Bearings		Mount
U	V	R	S	ES	N-W	AA	AB	DE	ODE	
0.875	NA	0.771	0.188	1.41	2.25	1.1	6	6205-2RZC3	6203-2RZC3	F1

BEARING LUBRICATION: The bearings come lubricated with Mobil Polyrex EM Polyurea Grease.



Electrical Helper.org

For All Your Electric Needs Since 1928

411 N Platte Ave. York, NE. 68467

AC-DC MOTORS :: SALES & SERVICE
REWINDING :: CUSTOM CONTROL PANEL

Kelly MacMillan
 Office Ph: 888-226-4917
 Fax: 888-226-4917
 Cell: 402-679-1579
 E-Mail: kelly@electricalhelper.com





F143T1S4C-MO




**FARM DUTY ELECTRIC MOTOR
HIGH STARTING TORQUE - MANUAL OVERLOAD
SINGLE PHASE - CAPACITOR START / CAPACITOR RUN
ROLLED STEEL CONSTRUCTION
TOTALLY ENCLOSED FAN COOLED**

PERFORMANCE DATA

HP	RPM	Frame	Voltage	Frequency (Hz)	Full Load S.F.	Insulation Class	NEMA Design	Slip (%)	NEMA Code	Enclosure Type	IP Rating	Max. Ambient
1	1760	143T	115/208-230	60	1.15	F	L	2.2	K	TEFC	55	40 °C

Amps (230V)		Efficiency (%)			Power Factor			Torque (ft-lb)			DE Bearing	ODE Bearing	Connection	Weight (lbs.)
FLA	LRA	100%	75%	50%	100%	75%	50%	FLT	LRT %	BDT %				
4.5	34.8	77.6	72.3	64.4	0.92	0.89	0.83	3	302	302	6205-2RZC3	6203-2RZC3	5 Lead/P1,P2	39

NAME PLATE

FARM DUTY SINGLE PHASE AC ELECTRIC MOTOR HIGH STARTING TORQUE MANUAL OVERLOAD PROTECTION																																																											
MODEL	F143T1S4C-MO			HP	1																																																						
FRAME	143T	ENCL	TEFC	PH	1																																																						
RPM	1760	CODE	K	HZ	60																																																						
DESIGN	L	CLASS	F	S.F.	1.15																																																						
EFFICIENCY	77.6	P.F.	0.92	IP RATING	55																																																						
DE BRG	6205-2RZC3		ODE BRG	6203-2RZC3																																																							
VOLT	115/208-230		LBS	39																																																							
AMPS	9/4.9-4.5		DUTY	CONT																																																							
S.F.AMPS	10.35/5.6-5.17		MAX AMB	40 °C																																																							
CONNECTION	5 Lead/P1,P2		SER #																																																								
<table border="0"> <tr> <td colspan="3">115V LOW VOLTAGE</td> <td colspan="3">208-230V HIGH VOLTAGE</td> </tr> <tr> <td>CCW</td> <td>L1</td> <td>CW</td> <td>CCW</td> <td>L1</td> <td>CW</td> </tr> <tr> <td>P1</td> <td>—</td> <td>P1</td> <td>P1</td> <td>—</td> <td>P1</td> </tr> <tr> <td>P2</td> <td>—</td> <td>P2</td> <td>P2</td> <td>—</td> <td>P2</td> </tr> <tr> <td>T3</td> <td>—</td> <td>T3</td> <td>T3</td> <td>—</td> <td>T2</td> </tr> <tr> <td>T8</td> <td>—</td> <td>T5</td> <td>T2</td> <td>—</td> <td>T3</td> </tr> <tr> <td>T2</td> <td>—</td> <td>T2</td> <td>T8</td> <td>—</td> <td>T5</td> </tr> <tr> <td>T4</td> <td>—</td> <td>T4</td> <td>T4</td> <td>—</td> <td>T4</td> </tr> <tr> <td>T5</td> <td>L2</td> <td>T8</td> <td>T5</td> <td>L2</td> <td>T8</td> </tr> </table>						115V LOW VOLTAGE			208-230V HIGH VOLTAGE			CCW	L1	CW	CCW	L1	CW	P1	—	P1	P1	—	P1	P2	—	P2	P2	—	P2	T3	—	T3	T3	—	T2	T8	—	T5	T2	—	T3	T2	—	T2	T8	—	T5	T4	—	T4	T4	—	T4	T5	L2	T8	T5	L2	T8
115V LOW VOLTAGE			208-230V HIGH VOLTAGE																																																								
CCW	L1	CW	CCW	L1	CW																																																						
P1	—	P1	P1	—	P1																																																						
P2	—	P2	P2	—	P2																																																						
T3	—	T3	T3	—	T2																																																						
T8	—	T5	T2	—	T3																																																						
T2	—	T2	T8	—	T5																																																						
T4	—	T4	T4	—	T4																																																						
T5	L2	T8	T5	L2	T8																																																						
Hernando, MS www.naemotors.com   																																																											

APPLICATIONS:

General purpose use on pumps, fans, conveyors, poultry equipment, air compressors and other farm duty machinery requiring high starting torques.



Electrical Helper.org

For All Your Electric Needs Since 1928

411 N Platte Ave. York, NE. 68467

**AC-DC MOTORS :: SALES & SERVICE
REWINDING :: CUSTOM CONTROL PANEL**

Kelly MacMillan

Office Ph: 888-226-4917

Fax: 888-226-4917

Cell: 402-679-1579

E-Mail: kelly@electricalhelper.com

